

# **NATA**

---

## **SUSTAINABILITY STANDARD**

### **FOR AVIATION BUSINESSES**



# NATA Sustainability Standard for Aviation Businesses

## 1. Purpose

It is the goal of the NATA Environment Committee to promote environmental sustainability for FBOs and other aviation businesses. The NATA Sustainability Standard for Aviation Businesses (the “Standard”) allows NATA member organizations to achieve a self-certification by taking steps that are designed to reduce Greenhouse Gas (GHG) emissions (including CO<sub>2</sub>), increase use of more environmentally friendly energy sources, reduce waste, and encourage sustainability. The Standard also offers those organizations that complete a self-certification process to highlight their conformance to this standard by displaying the corresponding logo.

## 2. Environmental Issues and Best Practices

The Standard aims to provide organizations with flexible, cost-effective options to pursue practices in their operations that are sustainable and can serve as a foundation for future enhancements. The FAA defines<sup>1</sup> airport sustainable actions as those that achieve these three goals:

- 1) Reduce environmental impacts
- 2) Help maintain high, stable levels of economic growth
- 3) Help achieve “social progress”, a broad set of actions that ensure organizational goals are achieved in a way that is consistent with the needs and values of the local community

The Standard provides a targeted list of actions that aviation businesses can make \*today\* to reduce their carbon footprint and support overall sustainability in their operations and community, while also providing options for future enhancements and/or adoption of other third-party certifications, if desired. Appendix C of this document provides links to some examples of these options for those organizations interested in pursuing them.

## 3. Self-Certification Process:

Organizations interested in participating in this program can achieve certification through these steps:

1. Complete either the self-certification checklist found in Appendix A (for individual locations) or Appendix B (for network organizations).
  - o Mandatory requirements must be met to achieve self-certification.
  - o Optional actions are voluntary but implementing them will result in being identified as reaching higher-tier status. All applicable items in a Tier level must be completed to achieve self-certification of that level.
2. Submit the completed and signed checklist to [sustainability@nata.aero](mailto:sustainability@nata.aero).
3. Renew annually to maintain self-certification.
  - o Self-certifications expire at the end of each calendar year.
  - o New checklists will be released each year in the fourth quarter for each subsequent calendar year.

If the Network Checklist is used, the level achieved will apply to all individual locations within that network. It does not preclude any individual locations within that network from using Appendix A to achieve a higher tier, and if done, it will apply to that location only.

<sup>1</sup> [www.faa.gov/airports/environmental/sustainability](http://www.faa.gov/airports/environmental/sustainability)



## 4. Self-Certification Levels

Aviation Businesses that return Appendix A will achieve the following levels by completing:

- |  |                                  |
|--|----------------------------------|
| ☑ All Required items                           | Green Aviation Business          |
| ☑ All Required items + Tier 1 items            | Green Aviation Business – Tier 1 |
| ☑ All Required items + Tiers 1 and 2 items     | Green Aviation Business – Tier 2 |
| ☑ All Required Items + Tiers 1, 2, and 3 items | Green Aviation Business – Tier 3 |

## 5. Implementation Notes

- ☑ The basic hierarchy of sustainability is to measure one's carbon footprint, then consider ways to:
  1. Reduce: Can we be more efficient and use less energy and natural resources?
  2. Replace: Can we replace use of fossil fuels?
  3. Offset: Can offsets be a bridge to carbon neutrality?
- ☑ Participation is limited to NATA member organizations only.
- ☑ The self-certification checklist must be signed by the Accountable Executive (e.g., owner, general manager, president, or other equivalent title).
- ☑ Any previously achieved items in the checklist can be applied toward self-certification. For example, if an aviation business has already replaced some lights with LEDs, that action “counts” for the corresponding requirement.
- ☑ The first requirement for self-certification is to calculate a carbon footprint as a baseline for future comparison. Since this baseline is not normalized for operations, facility size, or other measure of business activity, a business has the option of re-calculating its baseline in future years if it encounters significant growth or reduction in operations or facility size. It may be beneficial to consider using the same carbon footprint calculator for the baseline as well for subsequent reporting periods as the carbon footprint scoring methodology can vary.
- ☑ Although the checklist requires that the applicant calculate its carbon footprint, the actual score does not need to be disclosed to NATA for the purposes for obtaining this self-certification.
- ☑ Organizations are not required to submit or disclose any confidential materials.
- ☑ Upon receipt of the required documents, NATA will evaluate the submission prior to providing confirmation that the organization is permitted to utilize the Standard's logo.
- ☑ NATA reserves the right to request verification of any items and serves as sole adjudicator of completed checklists and applicability to receive the NATA Sustainability Standard for Aviation Businesses certification.

ONLY ORGANIZATIONS THAT COMPLETE ALL COMPONENTS OF THIS OPTIONAL SELF-CERTIFICATION PROCESS AND RECEIVE WRITTEN CONFIRMATION FROM NATA, HAVE PERMISSION TO USE AND DISPLAY THE NATA SUSTAINABILITY STANDARD LOGO DURING APPROVED TIMEFRAMES.

### Enclosures

Appendix A: Self-Certification Checklist and Application – Individual Location

Appendix B: Self-Certification Checklist and Application – Network

Appendix C: Resources and Tools

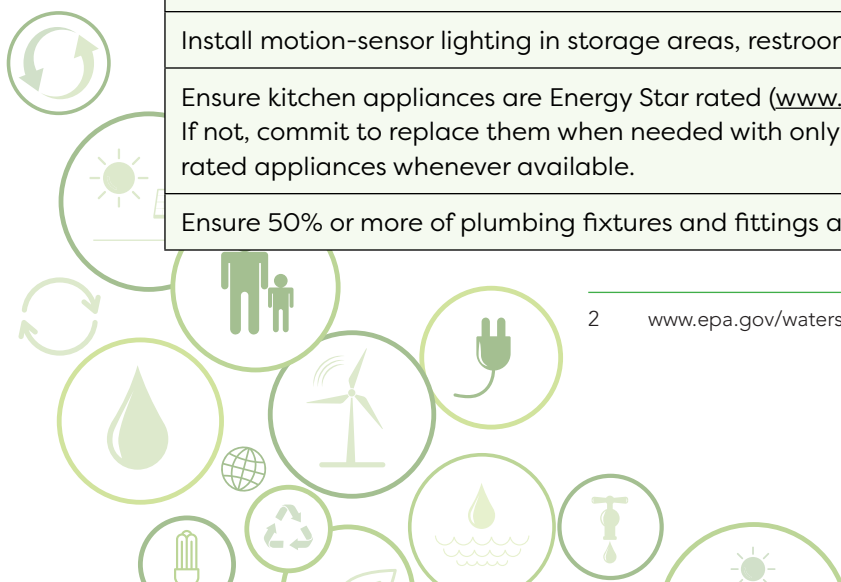
### Revision History

Number	Effective Date	Changes
2021.1	October 1, 2021	Original
2022.1	October 1, 2022	Addition of Network Checklist option; updates on checklist items; updated tools and references (Appendix C).

## Appendix A: NATA Sustainability Standard for Aviation Businesses Self-Certification Checklist and Application – Individual Location

Organization Name	
Location or Address	
Phone	
Email	
Accountable Executive (Name)	
Title	

Sustainability Standard Requirement <i>Note: For facilities-related items, any new construction must meet or exceed the facility's current tier in order maintain tier level.</i>	Required / Tier	Y / N / NA
Establish a baseline carbon footprint. Example tools are provided in Appendix C of this Standard.	Required	
Develop an Environmental Policy Statement, have Accountable Executive sign it, and place it in public-facing area. Example templates are provided in Appendix C of this Standard.	Required	
Make recycling receptacles available in employee and customer areas (applicable only if recycling is available in the aviation facility's geographical area); receptacles must be clearly labelled (trash, recycling, compost, etc.).	Required	
Implement paperless systems where feasible (e.g., fuel slips, receipts, survey, etc.).	Required	
Begin replacing existing incandescent lighting with energy efficient lighting such as LEDs.	Required	
Offer filtered water fill station or fountain to reduce plastic water bottle usage.	Required	
Phase out single use plastic items such as straws, coffee stirrs, etc. If water containers are provided, offer non-plastic or other sustainable options (in addition to plastic option, if desired).	Tier 1	
Create GSE policy to eliminate or reduce unnecessary idling.	Tier 1	
Install motion-sensor lighting in storage areas, restrooms, and offices.	Tier 1	
Ensure kitchen appliances are Energy Star rated ( <a href="http://www.energystar.gov">www.energystar.gov</a> ). If not, commit to replace them when needed with only Energy Star rated appliances whenever available.	Tier 1	
Ensure 50% or more of plumbing fixtures and fittings are low flow <sup>2</sup> .	Tier 1	



Develop and implement a sustainable sourcing/procurement policy. Example policies are provided in Appendix C of this Standard.	Tier 2	
For break area snack offerings, include at least one seasonal, locally sourced product. Mark "NA" if snacks are not offered, vending machine only are used, or if such products are not reasonably available locally.	Tier 2	
At least one or more GSE or base vehicles (e.g., ramp vehicles or crew cars) are electric-only.	Tier 2	
Achieve a reduction in baseline carbon footprint (applicable only after 1st year of participation and beyond).	Tier 2	
Provide any one (or more) of the following: <ul style="list-style-type: none"> <li>· Ride sharing opportunities (by designating a (car)parking area for ride share vehicles and services); and/or</li> <li>· Subsidy for public transportation for employees, and/or</li> <li>· Charging station(s) for electric vehicle(s).</li> </ul>	Tier 2	
100% of plumbing fixtures and fittings are low flow <sup>2</sup> .	Tier 2	
Create baseline of GSE emissions by inventorying equipment and create written plan to reduce GSE emissions by replacing GSE or reducing with lower-emission energy sources.	Tier 2	
Install electric car charging station(s) on land-side parking area.	Tier 3	
Demonstrate reduction in emissions from GSE baseline established in Tier 2 per written plan.	Tier 3	
Integrate renewable energy source (e.g., solar, wind, geothermal, etc.) or purchase green power tariff/carbon offsets (where available).	Tier 3	
Install interlocks on hangar doors or provide standard operating procedures to minimize open hangar doors for pre-conditioned (heated/cooled) hangar areas.	Tier 3	
Replace <b>*all*</b> existing incandescent interior and exterior lighting with energy efficient lighting such as LEDs.	Tier 3	
Use renewable diesel in place of conventional diesel fuel for GSE, where available.	Tier 3	

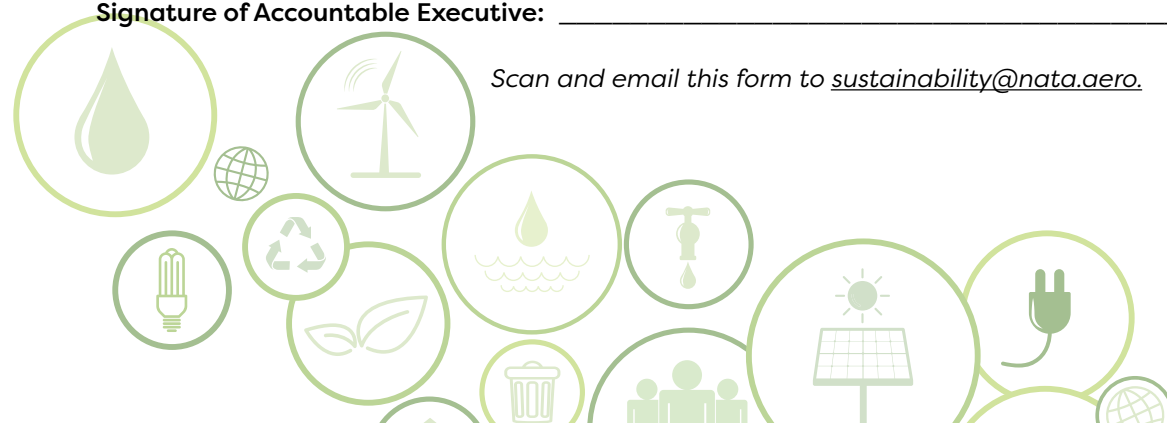
Notes and Comments: \_\_\_\_\_

Signature of Accountable Executive: \_\_\_\_\_ Date: \_\_\_\_\_

Scan and email this form to [sustainability@nata.aero](mailto:sustainability@nata.aero).



[sustainability@nata.aero](mailto:sustainability@nata.aero)



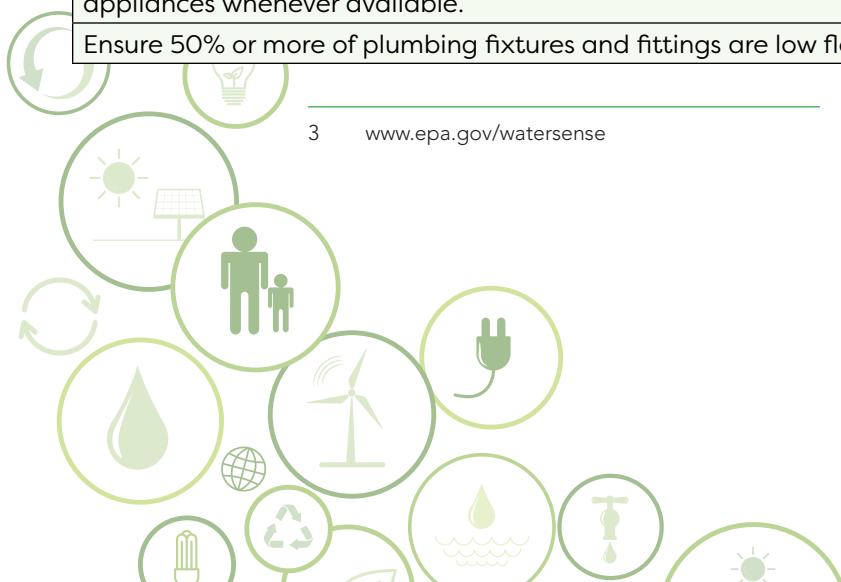
## Appendix B: NATA Sustainability Standard for Aviation Businesses

### Self-Certification Checklist and Application – Multi-Location Network

<b>Organization Name</b>	
<b>Locations</b>	
<b>Contact Person Phone Number</b>	
<b>Contact Person Email</b>	
<b>Accountable Executive (AE) Name</b>	
<b>AE Title</b>	

Sustainability Standard Requirement <i>Note: For facilities-related items, any new construction must meet or exceed the facility's current tier in order maintain tier level.</i>	Required / Tier	Y / N / NA
Establish a baseline carbon footprint for the locations. Example tools are provided in Appendix C of this Standard.	Required	
Develop an Environmental Policy Statement, have Accountable Executive sign it, and place it in public-facing areas at all locations. Example templates are provided in Appendix C of this Standard.	Required	
Make recycling receptacles available in employee and customer areas (applicable only if recycling is available in the aviation facility's geographical area); receptacles must be clearly labelled (trash, recycling, compost, etc.).	Required	
Implement paperless systems where feasible (e.g., fuel slips, receipts, survey, etc.).	Required	
Begin replacing existing incandescent lighting with energy efficient lighting such as LEDs at 50% or more of locations.	Required	
Offer filtered water fill station or fountain to reduce plastic water bottle usage (all locations).	Required	
Phase out single use plastic items such as straws, coffee stirrs, etc. If water containers are provided, offer non-plastic or other sustainable options (in addition to plastic option, if desired) at all locations.	Tier 1	
Create GSE policy to eliminate or reduce unnecessary idling.	Tier 1	
Install motion-sensor lighting in storage areas, restrooms, and offices.	Tier 1	
Ensure kitchen appliances are Energy Star rated ( <a href="http://www.energystar.gov">www.energystar.gov</a> ). If not, commit to replace them when needed with only Energy Star rated appliances whenever available.	Tier 1	
Ensure 50% or more of plumbing fixtures and fittings are low flow <sup>3</sup> .	Tier 1	

3 [www.epa.gov/watersense](http://www.epa.gov/watersense)



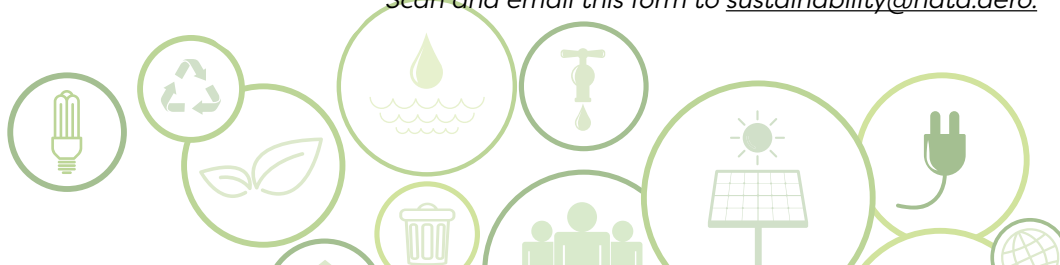
Develop and implement a sustainable sourcing/procurement policy. Example policies are provided in Appendix C of this Standard.	Tier 2	
For break area snack offerings, include at least one seasonal, locally sourced product at locations where available. Mark "NA" if snacks are not offered, vending machine only are used, or if such products are not reasonably available locally.	Tier 2	
At least one or more GSE or base vehicles (e.g., ramp vehicles or crew cars) are electric-only at 80% or more of all locations.	Tier 2	
Achieve a reduction in baseline carbon footprint (applicable only after 1st year of participation and beyond). This can be network-wide summary of footprint.	Tier 2	
Provide any one (or more) of the following: <ul style="list-style-type: none"> <li>· Ride sharing opportunities (by designating a (car)parking area for ride share vehicles and services); and/or</li> <li>· Subsidy for public transportation for employees, and/or</li> <li>· Charging station(s) for electric vehicle(s).</li> </ul>	Tier 2	
100% of plumbing fixtures and fittings are low flow <sup>2</sup> .	Tier 2	
Create baseline of GSE emissions by inventorying equipment and create written plan to reduce GSE emissions by replacing GSE or reducing with lower-emission energy sources. This can be network-wide summary of footprint.	Tier 2	
Install electric car charging station(s) on land-side parking area of all locations.	Tier 3	
Demonstrate reduction in emissions from GSE baseline established in Tier 2 per written plan. This can be network-wide summary of footprint.	Tier 3	
Integrate renewable energy source (e.g., solar, wind, geothermal, etc.) or purchase green power tariff/carbon offsets (where available) at 80% or more of locations.	Tier 3	
Install interlocks on hangar doors or provide network-wide procedures to minimize open hangar doors for pre-conditioned (heated/cooled) hangar areas.	Tier 3	
Replace all existing incandescent interior and exterior lighting with energy efficient lighting such as LEDs. <sup>4</sup>	Tier 3	
Use renewable diesel in place of conventional diesel fuel for GSE, where available.	Tier 3	

<sup>4</sup> The energy efficient alternates would include, but not limited to, LEDs, Compact Fluorescent Lights (CFL), or Halogen Incandescent Lights.

**Notes and Comments:** \_\_\_\_\_

**Signature of Accountable Executive:** \_\_\_\_\_ **Date:** \_\_\_\_\_

Scan and email this form to [sustainability@nata.aero](mailto:sustainability@nata.aero).



[sustainability@nata.aero](mailto:sustainability@nata.aero)

o [www.iso.org](http://www.iso.org)

o [www.faa.gov](http://www.faa.gov)

o [2021 FAA Sustainable Aviation Plan.pdf](https://www.faa.gov/airports/airports/2021/FAA%20Sustainable%20Aviation%20Plan.pdf)

o [www.airportsustainability.org](http://www.airportsustainability.org)

If you're looking for more information, please contact Mega Meisenbach at [meisenbach@faa.gov](mailto:meisenbach@faa.gov)

- ③ Sample Environmental Policy Statement
- ③ Sample sourcing/procurement policy
- ③ Additional ideas for sustainability strategies

- ③ Greenhouse Gas Protocol Calculation Tool:
  - GHG Emission Calculation Tool: March 2021
  - [www.ghgprotocol.org/calculation-tools](http://www.ghgprotocol.org/calculation-tools)
- ③ 4 Air: Carbon Calculator
  - Excel tool to file to measure and track carbon footprint
  - [www.4AIR.aero](http://www.4AIR.aero)
- ③ US EPA
  - [www.epa.gov/climateleadership/ghg-emission-factors-hub](http://www.epa.gov/climateleadership/ghg-emission-factors-hub)
  - [www.epa.gov/climateleadership/simplified-ghg-emissions-calculator](http://www.epa.gov/climateleadership/simplified-ghg-emissions-calculator)

- ③ SAF Coalition:
  - [www.futureofsustainablefuel.com](http://www.futureofsustainablefuel.com)
  - [Sustainable Aviation Fuel Guide](#)
- ③ EPA Reduction Goals and Strategies
  - [https://www.epa.gov/climateleadership/ghg-reduction-programs-strategies#Energy\\_Efficiency](https://www.epa.gov/climateleadership/ghg-reduction-programs-strategies#Energy_Efficiency)
  - U.S. EPA's [ENERGY STAR Program](#) and [EPA Green Power Partnership](#)
- ③ Leadership in Energy and Environmental Design (LEED):
  - [www.usgbc.org](http://www.usgbc.org)
- ③ Institute for Sustainable Infrastructure – ENVISION:
  - [www.sustainableinfrastructure.org](http://www.sustainableinfrastructure.org)
- ③ Carbon Offsetting and Reduction Scheme for International Aviation (CORSIA)
  - [www.icao.int/environmental-protection/CORSIA](http://www.icao.int/environmental-protection/CORSIA)
- ③ ISO 14001 Environmental Management Systems Standard
  - [www.iso.org](http://www.iso.org)
- ③ Air Transport Action Group (ATAG)
  - [www.enviro.aero](http://www.enviro.aero)
- ③ FAA Sustainability
  - [www.faa.gov/sustainability](http://www.faa.gov/sustainability)
  - [2021 FAA Climate Action Plan: https://www.faa.gov/sites/faa.gov/files/2021-11/Aviation\\_Climate\\_Action\\_Plan.pdf](#)
- ③ Sustainable Aviation Guidance Alliance
  - [www.airportsustainability.org](http://www.airportsustainability.org)

If you need assistance,  
please contact  
Megan Eisenstein at  
[meisenstein@nata.aero](mailto:meisenstein@nata.aero).